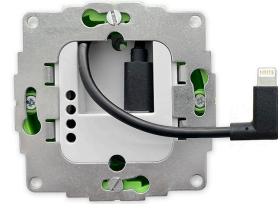


Article datasheet s48 L

Art. No.:	s48 L
Article:	sCharge 20W Lightning®
Short text I:	Flush-mounted power supply unit 230V, 20W with 40cm Lightning® cable
MPN:	sCh-20W-Lightning-1.0
EAN:	4260258610482
Net weight (kg):	0.12
Gross weight (kg):	0.12
Custom tariff number:	CTN 8504 4083
Length (m):	0.05
Width (m):	0.08
Height (m):	0.08



230V power supply 20W with USB C to Lightning® adapter cable.

The world's first flush-mounted power supply unit that delivers 20W in a wall box that is only 40mm deep. But not only the power supply is flush-mounted, also the USB plug does not protrude beyond the wall. This allows for very flat installations in front of the wall.

Nominal input: 100 - 250 V ~, ±10 % , 50 - 60 Hz,

Nominal output: 5 V 3A and 9V 2,22A

Compatibility:

All devices with Lightning® connector

The sCharge 20W fits into all standard device boxes with min. 42mm depth

Approvals:

KEMA (EUR)

Low Voltage Directive LVD EN 62368-1:2014 + A11:2017

EMC Directive EN 50032:2015

Ecodesign Directive 2009/125/EC, 2019/1782/EC

RoHS Directive 2011/65/EU, 2015/863

Reach Regulation EC No 1907/2006, 1272/2008

Scope of delivery:

In-wall Charger 20W with Lightning® cable, 30 cm long

Instructions in EU languages, Turkish, Russian, Chinese.

Material:

Metal support frame, plastic housing.

RoHS compatible

WEEE registration: DE 64398562

Dimensions:

Box 80 x 80 x 50 mm (HxWxD)

Product 71 x 71 x 33 mm with metal frame

Weight:

120 g (incl. adapter cable and packaging)

Packaging:

Completely made of cardboard

EAN 4260258610482

MPN sCh-20W-Lightning-1.0

Made in China.